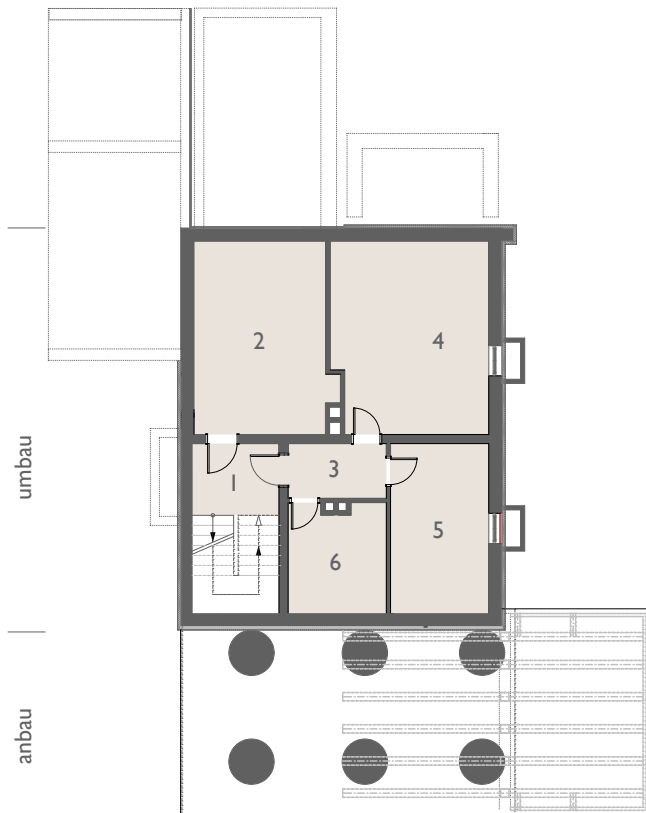


Haus B04

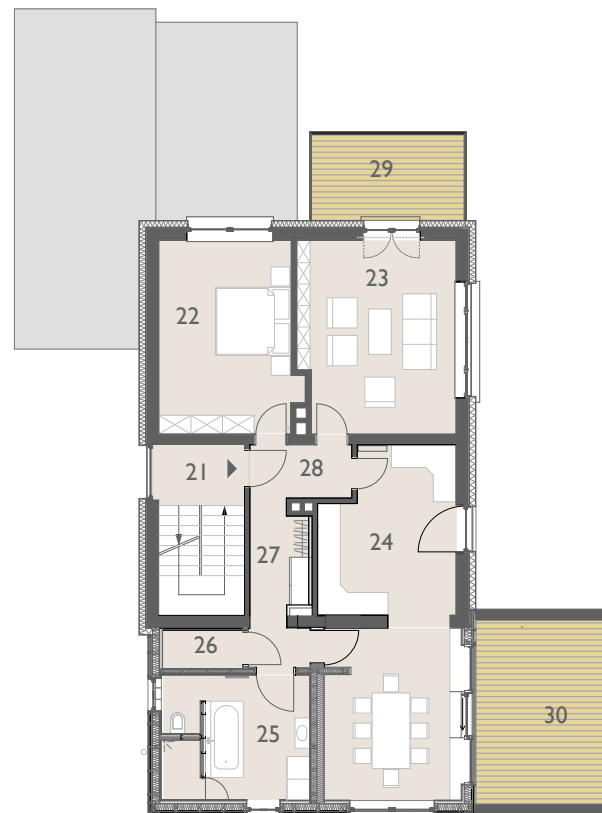


grundriss kellergeschoss

- 1 podium
- 2 heizung
- 3 flur
- 4 keller 1
- 5 keller 2
- 6 waschkeller

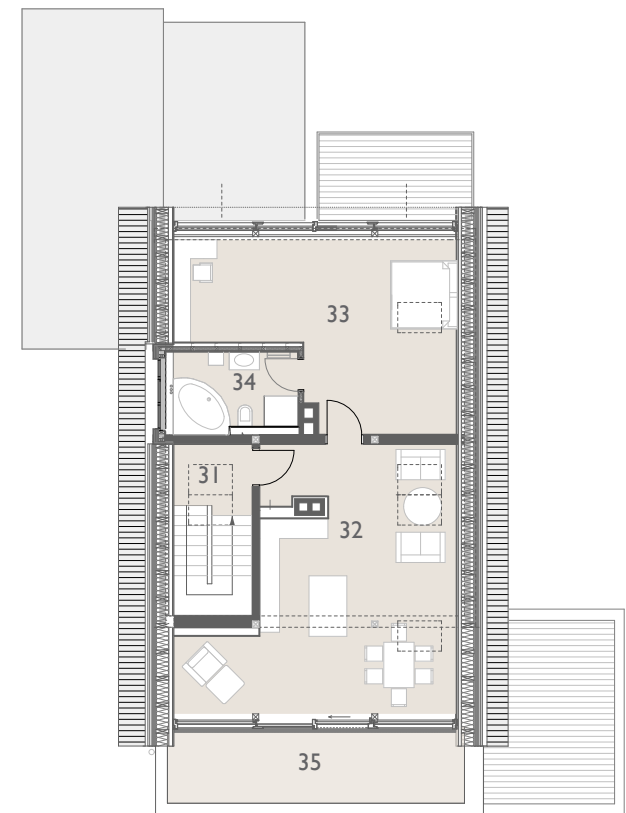
gebäudedaten

sanierung MFH / anbau 2013-2014
 standort_münchen- trudering
 leistungsphasen I-8
 wohnflächen_ alt_145,83 m²
 neu_346,02 m²



grundriss obergeschoss

- 21 podium
- 22 Flur
- 23 schlafen
- 24 wohnen
- 25 küche/essen
- 26 bad
- 27 abstellraum
- 28 garderobe
- 29 balkon
- 30 terrasse

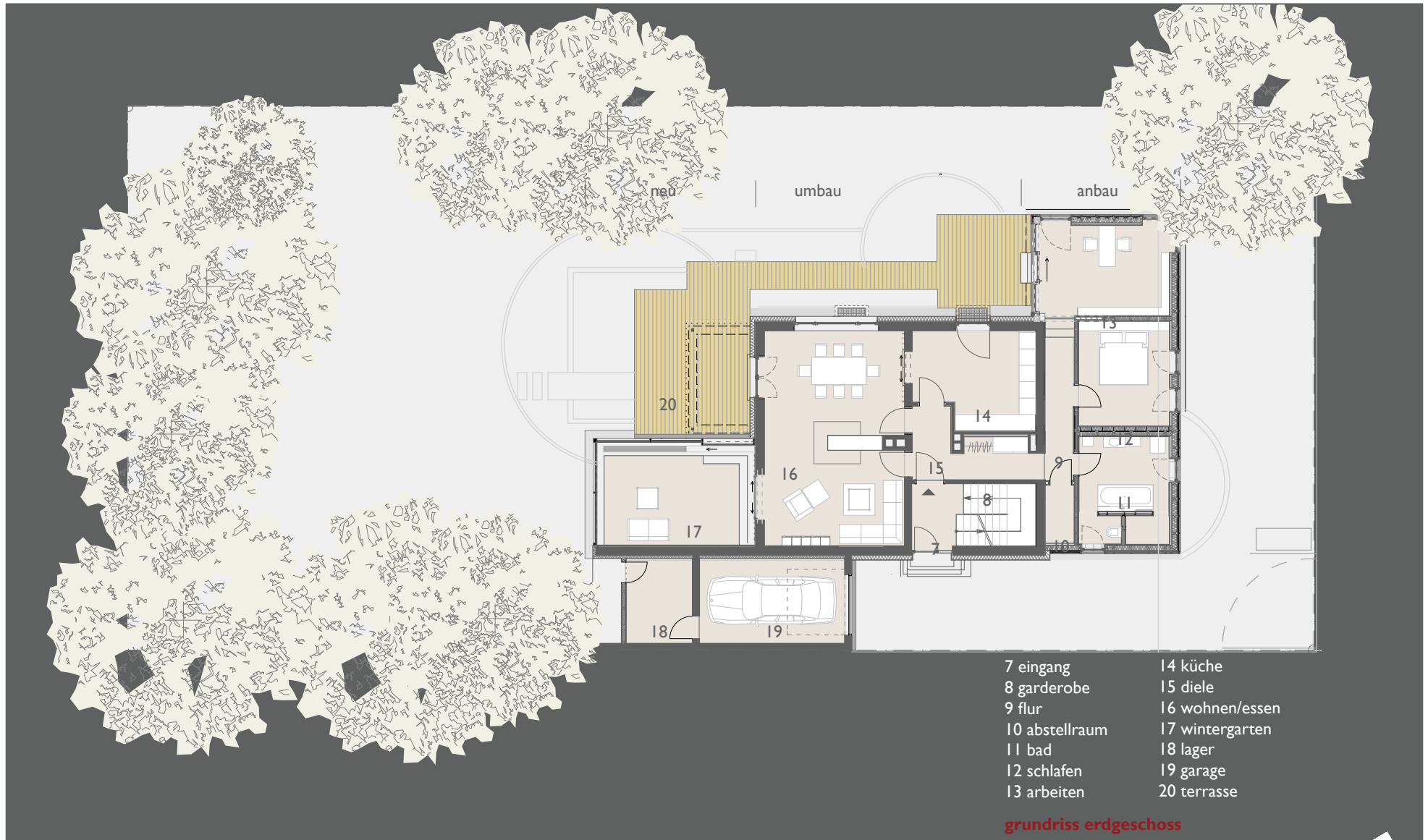


grundriss dachgeschoss

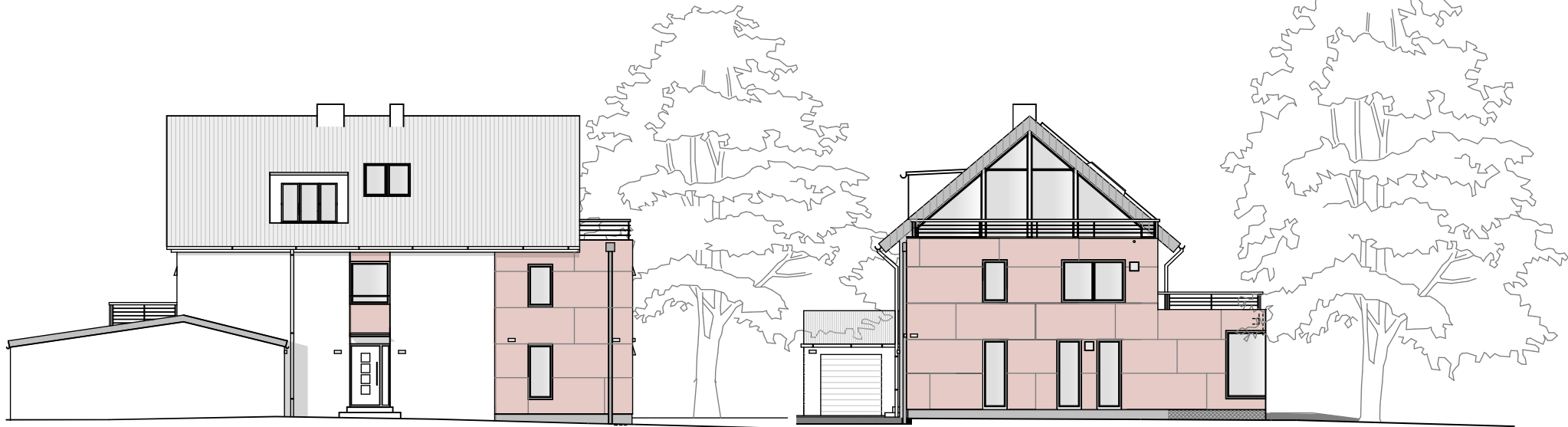
- 31 podium
- 32 wohnen/küche/essen
- 33 schlafen
- 34 bad
- 35 terrasse



Haus B04

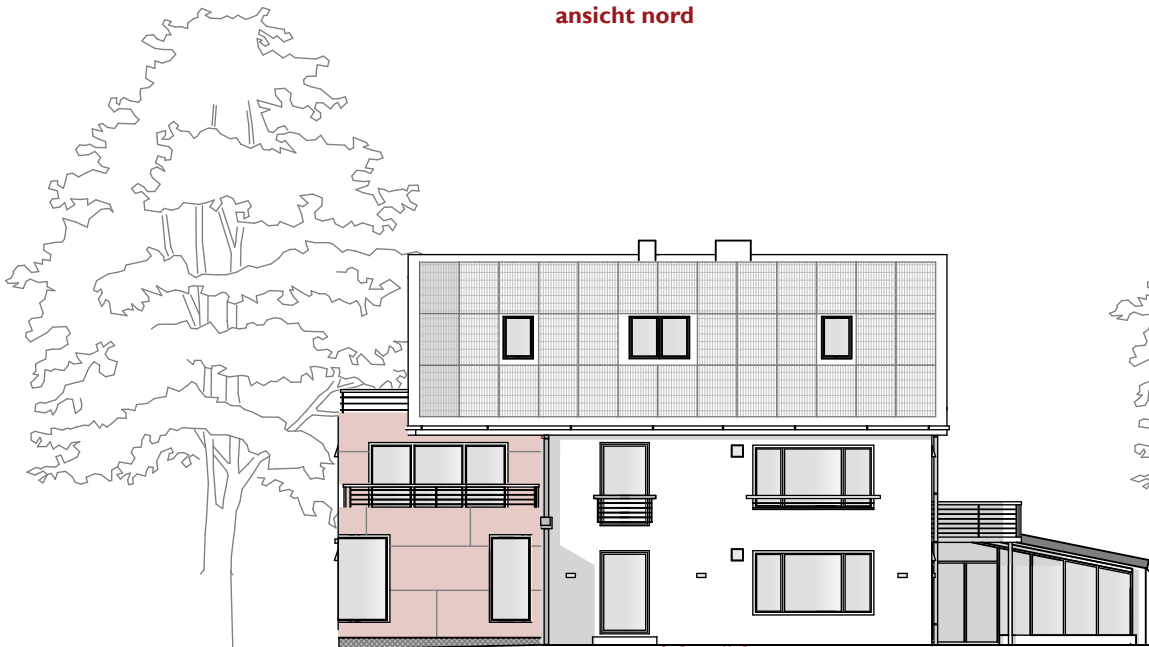


Haus B04



ansicht nord

ansicht west



ansicht süd



ansicht ost

Haus B04



Haus B04

